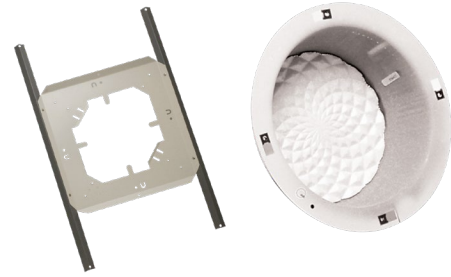


FEATURES:

- Metal Construction
- Meets UL 3 Hour Burn Rating
- Fire Retardant Damping Material
- Five Combination 1/2" - 3/4" Knockouts
- Compatible with 2' X 2', 2' X 4' Ceiling Grids
- Compatible with Round or Square Baffles



DESCRIPTION:

STEEL BRIDGE: Provides a solid mounting structure for ceiling speakers. The steel bridge prevents ceiling tile sag and is coated to inhibit rust. This bridge may be used with all Clarity flush mount ceiling speakers. The S-550 must be ordered in multiples of 5 as model S-550-5.

STEEL BACKBOX: Prevents debris and insulation from coming into contact with the speaker. The S-551 meets the UL UUMW standard and is typically used in plenum return ceilings. In open ceiling structures, the backbox may be used as an enclosure for a speaker by attaching the backbox directly to the beam and mounting a speaker to the backbox with the hardware provided. The S-551 must be ordered in multiples of 5 as model S-551-5.

Specifications:

DIMENSIONS AND WEIGHT

S-550-5 23.75" (60.3 cm) L x 14.5" (36.8 cm) W x 1.5" (3.8 cm)
Weight each: 1.0 lb. (.45 kg), **Carton Weight:** 5.5 lbs. (2.48 kg) (5 per carton), **Shipping Weight:** 10 lbs. (4.55 kg)

DIMENSIONS AND WEIGHT

S-551-5 12.3" (31.2 cm) D x 4" (10.2 cm) H
Weight each: 1.8 lbs. (.82 kg), **Carton Weight:** 9.2 lbs. (4.18 kg) (5 per carton), **Shipping Weight:** 10 lbs. (4.55 kg)

MOUNTING

Extruded holes are provided for four #8 - 32 screws allowing for round or square baffles to be mounted. Both circular and square bolt patterns are existing. Suspension points are included for ceiling to speaker security.

ARCHITECTS' AND ENGINEERS

S-550 The Ceiling Speaker Bridge, Model S-550 shall be lightweight metal construction. It shall have four (4) extruded holes for #8 - 32 screws in two patterns. It shall have 1 1/4" diameter bolt circle and shall have a 10" x 10" square. It shall have 8 1/4" spaced slot for torsion springs. It shall be compatible with 2' x 2' and 2' x 4' drop ceiling tiles and the S-551 backbox. It shall be compatible with both round and square ceiling speaker baffles. Dimensions shall be 23.75" (60.3 cm) L x 14.5" (36.8 cm) W x .56" (1.42 cm). The approximate weight each shall be 1.0 lb. (.45 kg). The S-550 must be ordered in multiples of 5 as model S-550-5.

S-551 The Ceiling Backbox, Model S-551 shall be lined with an anti-resonant fire-retardant material and shall meet the UL UUMW listing. It shall have four combination 1/2" / 3/4" knockouts located at 90° on the side of the backbox and one combination 1/2" / 3/4" knockout in the top center of the backbox. It shall be made of 22-gauge coated steel. Perforated steel straps shall be provided for hanging support wires. It shall be compatible with the S-550 metal ceiling speaker bridge. Dimensions shall be 12.3" (31.2 cm) D x 4" (10.2 cm) H. The approximate weight each shall be 1.8 lbs. (.82 kg). The S-551 must be ordered in multiples of 5 as model S-551-5.

Warranty information may be found on our website at www.valcom.com/warranty.