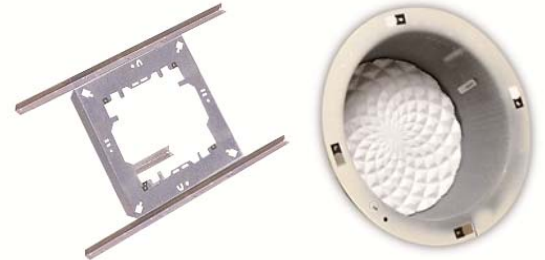


### FEATURES:

- METAL CONSTRUCTION
- MEETS UL 3 HOUR BURN RATING
- FOUR COMBINATION  $\frac{1}{2}$ " -  $\frac{3}{4}$ " KNOCKOUTS
- COMPATIBLE WITH 2' X 2', 2' X 4' CEILING GRIDS
- LIGHTWEIGHT METAL CONSTRUCTION
- COMPATIBLE WITH ROUND OR SQUARE BAFFLES



### DESCRIPTION:

**STEEL BRIDGE:** The V-9914M-5 provides a solid mounting structure for ceiling speakers. The steel bridge prevents ceiling tile sag and is galvanized to inhibit rusting. This bridge and backbox may be used with all Valcom flush mount ceiling speakers.

**BACKBOX:** This sturdy metal backbox protects the speaker from debris and insulation. The V-9915M-5 meets the UL U.U.M.W. standard and is typically used in plenum return ceilings. The V-9914M-5 and V-9915M-5 must be ordered in multiples of 5.

**COMBINATION:** The V-9916M is a combination of the above listed steel bridge and backbox.

### Specifications:

#### DIMENSIONS AND WEIGHT

##### V-9914M-5

23.75" (60.3 cm) L x 14.5" (36.8 cm) W x 1.5" (3.8 cm)

Weight: 2 lbs (.9 kg)

##### V-9915M-5

12.3" (31.2 cm) D x 4" (10.2 cm) H

Weight: 2 lb (.9 kg)

#### MOUNTING

Extruded holes are provided for four #8 - 32 screws allowing for round or square baffles to be mounted.

Both circular and square bolt patterns are existing.

Suspension points are included for ceiling to speaker.



Technical Specification

# CEILING BRIDGE AND BACKBOX MODEL V-9914M-5 (BRIDGE) V-9915M-5 (BACKBOX) V-9916M (BRIDGE & BACKBOX COMBINATION)

---

## ARCHITECTS' AND ENGINEERS

The Ceiling Speaker Bridge, Model V-9914M-5 shall be lightweight metal construction. It shall have four (4) extruded holes for #8 - 32 screws in two patterns. It shall have 11¼" diameter bolt circle and shall have a 10" x 10" square. It shall have 8¼" spaced slot for torsion springs. It shall be compatible with 2' x 2' and 2' x 4' drop ceiling tiles and must be used with the V-9915M Backbox. Dimensions shall be 23.75" (60.3 cm) L x 14.5" (36.8 cm) W x 1.5" (3.8 cm). The approximate weight shall be 2 lbs (.91 kg).

The Ceiling Backbox, Model V-9915M-5 shall be lined with an anti-resonant fire retardant material and shall meet the UL U.U.M.W listing. It shall have four ½" and ¾" knockouts at 90°. It shall be made of 22 gauge coated steel. Perforated steel straps shall be provided for hanging support wires. It shall be compatible with the V-9914M Bridge. Dimensions shall be 12.3" (31.2 cm) D x 4" (10.2 cm) H. The approximate weight shall be 2 lbs (.91 kg).

The V-9916M is a combination of the above listed steel bridge and backbox.

## LIMITED WARRANTY

Valcom, Inc. warrants its products to be free from defects in materials and workmanship under conditions of normal use and service for a period of one year from the date of shipment. The obligation under this warranty shall be limited to the replacement, repair or refund of any such defective device within the warranty period, provided that:

1. inspection by Valcom, Inc. indicates the validity of the claim,
2. the defect is not the result of damage, misuse, or negligence after the original shipment,
3. the product has not been in any way repaired by others and that factory sealed units are unopened (A service charge plus parts and labor will be applied to units defaced or physically damaged).
4. freight charges for the return of products to Valcom, Inc. are prepaid,
5. all units "out of warranty" are subject to a service charge. The service charge will cover minor repairs (major repairs will be subject to additional charges for parts and labor)

**This warranty is in lieu of and excludes all other warranties expressed or implied, and in no event shall Valcom, Inc. be liable for any anticipated profits, consequential damages, loss of time or other losses incurred by the buyer in connection with the purchase, operation or use of the product.**

This warranty specifically excludes damage incurred in shipment. In the event a product is received in damaged condition, the carrier should be notified immediately. Claims for such damage should be filed with the carrier involved in accordance with the F.O.B. point.