

## ADA COMPLIANT STROBE V-5580041A

### INTRODUCTION

These instructions contain the specifications and information necessary to install, operate, and maintain the ADA Compliant Strobe.

### SPECIFICATIONS

#### Features

- Cost effective and versatile solution to applications requiring visual alerts or strobes
- ADA compliant with a 110 Candella rating
- Typical coverage of 4900 sq. ft. @ 80" mounting height
- Supplied with accessories to fit almost any application



#### Activation Methods

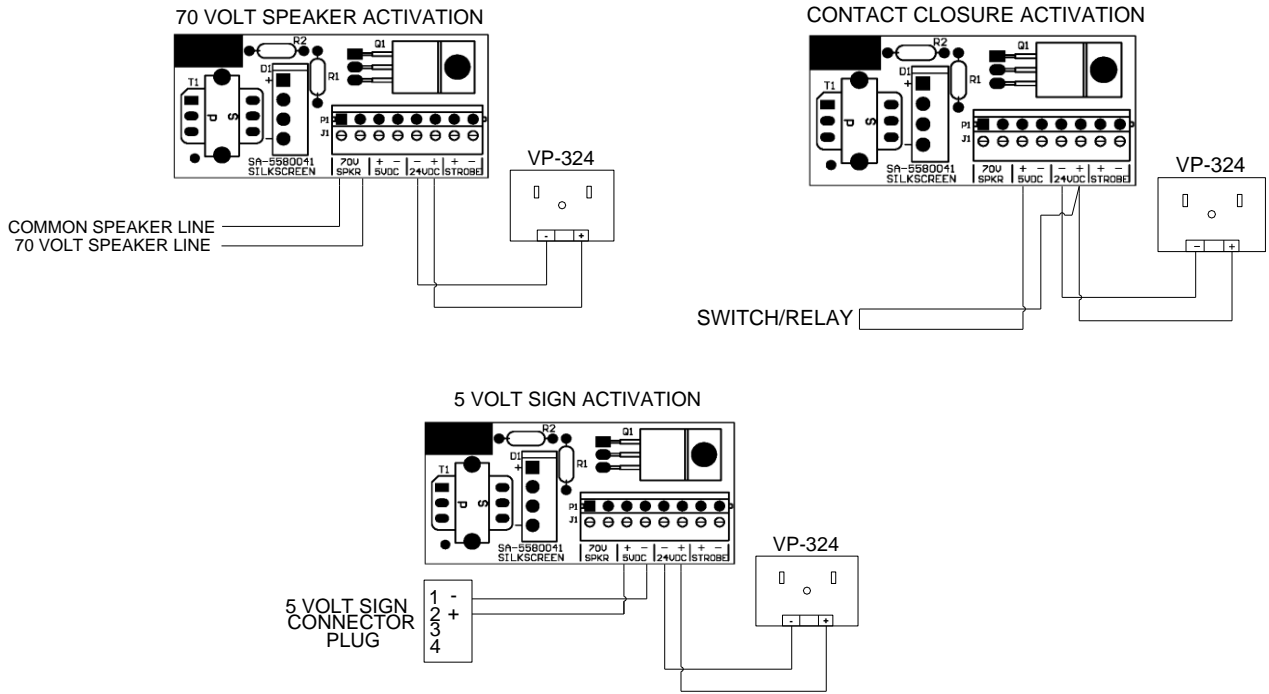
- 70 Volt amplified speaker signal
- Dry contact closure
- Electronic Message Sign 5V signal

#### Dimensions/Weight

4.50"H x 4.50"W x 4.55"D  
(11.43cm H x 11.43cm W x 11.56cm D)  
1.38 lbs. (.63 kg)

#### Specifications

- Brightness 110 Candella
- Power supply operating voltage input 110VAC
- Strobe minimum operating voltage 18VDC
- Strobe maximum operating voltage 30VD
- Current draw 225mA
- Maximum instantaneous 450mA
- Activation voltage requirements
  - Electronic message sign 40 $\mu$ A at 3 Volts
  - 70 Volt audio signal 70 Volts peak
- Activation voltage 70 Volts minimum 5 Volts
- Environmental Rating Indoor
- Connector Cable footage 6 feet
- Mounting hardware 2 wall hangers
- Lens color Amber
- Faceplate cover Ivory
- Metal case Silver



## TECHNICAL ASSISTANCE

When calling, have a VOM and a telephone test set available and call from the job site.

Call (800) 782-5266 and ask for PagePac Technical Support, or call (540) 427-6000 for Valcom 24-hour Automated Support or visit our websites at <http://www.pagepac.com> and [www.valcom.com](http://www.valcom.com).

Should repairs be necessary, attach a tag to the unit clearly stating company name, address, phone number, contact person, and the nature of the problem. Send the unit to:

**Valcom, Inc.**  
**PagePac® Repair Dept.**  
**5614 Hollins Road**  
**Roanoke, VA 24019-5056**

### VALCOM LIMITED WARRANTY

Valcom, Inc. warrants its products to be free from defects in materials and workmanship under conditions of normal use and service for a period of one year from the date of shipment. The obligation under this warranty shall be limited to the replacement, repair or refund of any such defective device within the warranty period, provided that:

1. inspection by Valcom, Inc. indicates the validity of the claim;
2. the defect is not the result of damage, misuse or negligence after the original shipment;
3. the product has not been altered in any way or repaired by others and that factory sealed units are unopened (a service charge plus parts and labor will be applied to units defaced or physically damaged);
4. freight charges for the return of products to Valcom are prepaid;
5. all units 'out of warranty' are subject to a service charge. The service charge will cover minor repairs (major repairs will be subject to additional charges for parts and labor).

**This warranty is in lieu of and excludes all other warranties, expressed or implied and in no event shall Valcom, Inc. be liable for any anticipated profits, consequential damages, loss of time or other losses incurred by the buyer in connection with the purchase, operation or use of the product.**

This warranty specifically excludes damage incurred in shipment. In the event a product is received in damaged condition, the carrier should be notified immediately. Claims for such damage should be filed with the carrier involved in accordance with the F.O.B. point. Headquarters

Valcom, Inc:  
 5614 Hollins Road  
 Roanoke VA 24019-5056  
 Phone: (540) 563-2000  
 Fax: (540) 362-9800