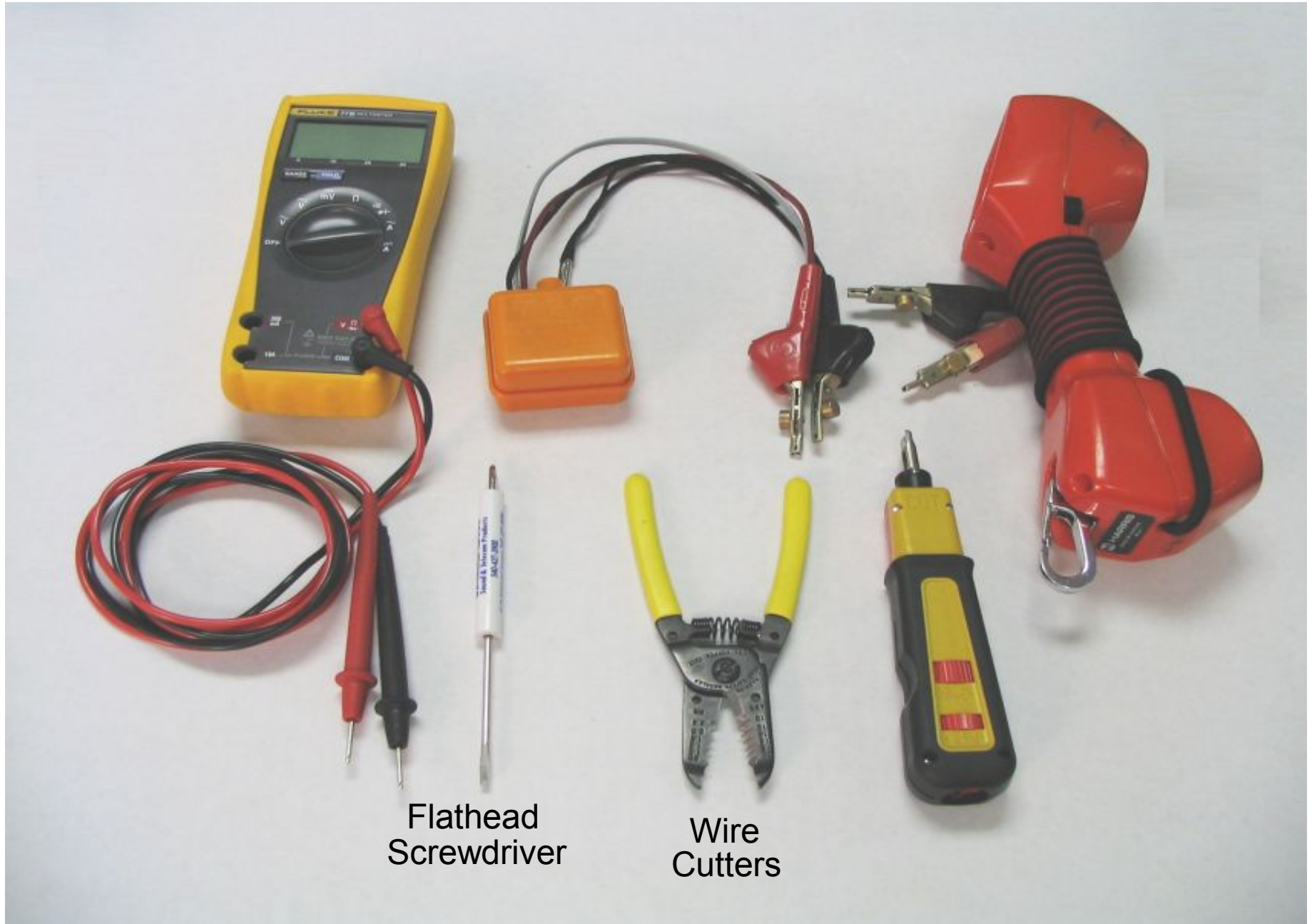


Lay-In Ceiling Speaker V-9022 Installation

Tools used in this demonstration include:



Flathead
Screwdriver

Wire
Cutters

The speaker is a V-9022 with T-Bar.



(T-Bar is sold separately.)

Remove the box knockout.



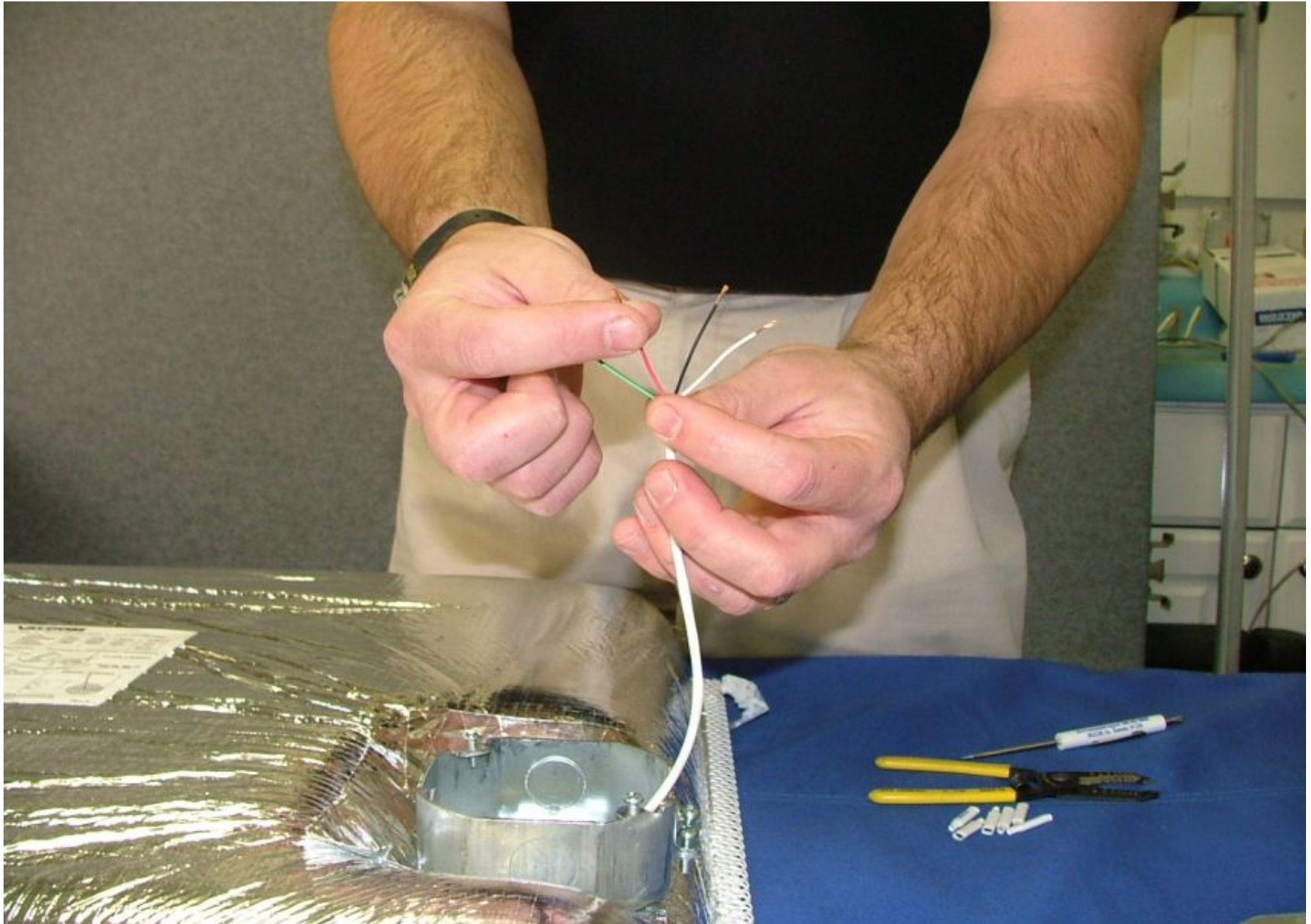
Insert the metal grommet.



The Green wire is Audio with no polarity.



The Red wire is Audio with no polarity.



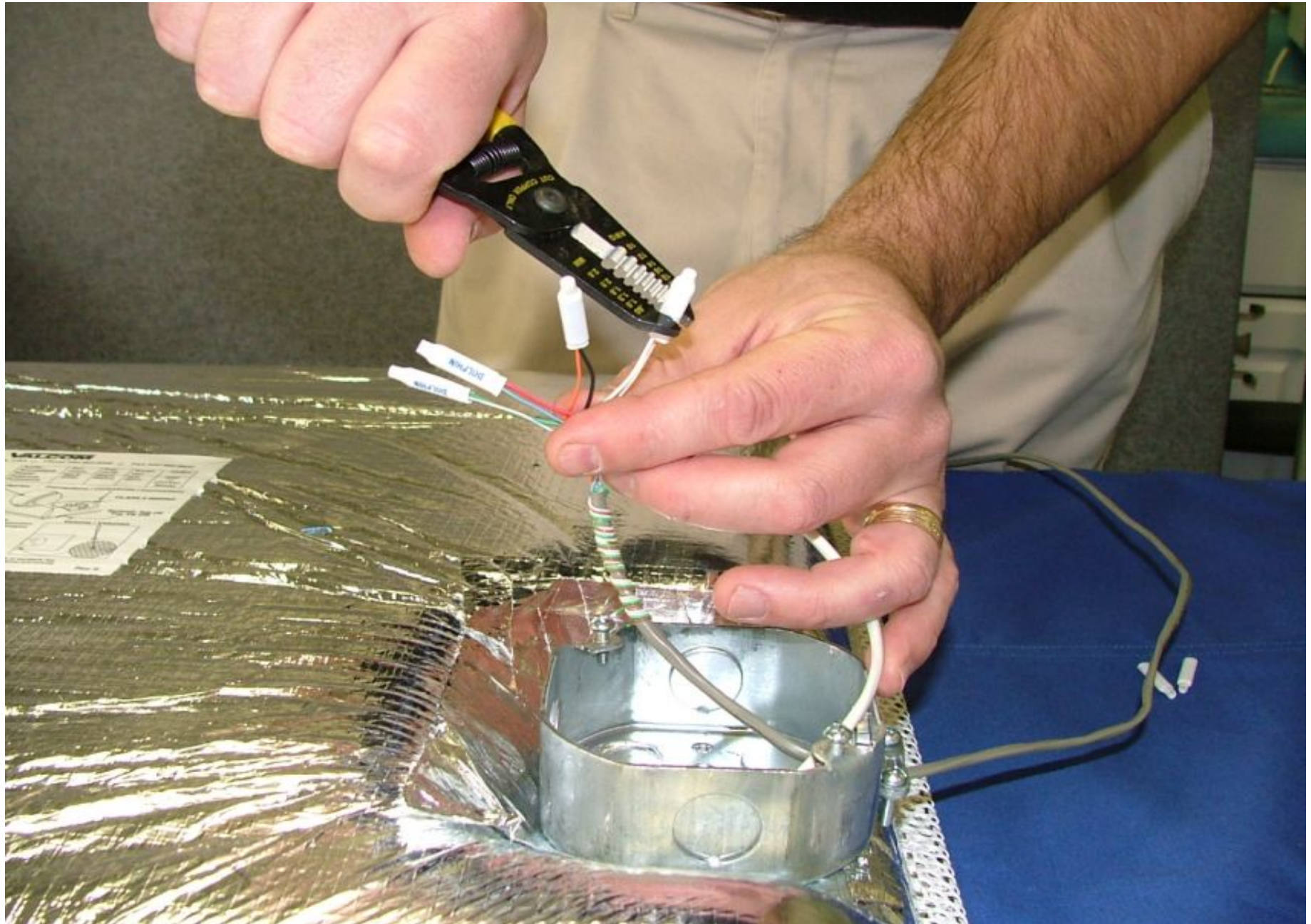
The Black wire is Ground.



The White wire is negative 24 volts DC.



Connect all wiring.



Screw the metal plate into position.



Place the T-Bar in the tile grid.



(T-Bar is sold separately.)

Place the V-9022 in the ceiling grid.



Lower the V-9022 into position in the ceiling grid.



Adjust the volume control.



**THE SUGGESTIONS PROVIDED MAY OR
MAY NOT BE SUITABLE FOR YOUR
INTENDED APPLICATION.**

**PLEASE CONSIDER THIS INFORMATION
CAREFULLY BEFORE INCORPORATING IT
INTO YOUR SYSTEM DESIGN.**

**VALCOM DISCLAIMS ANY
RESPONSIBILITY
FOR ACCURACY OR COMPLETENESS.**