

Frequently Asked Questions

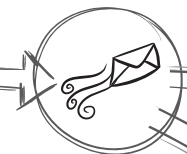
• What is ShakeAlert®?

ShakeAlert is an Earthquake Early Warning system developed by the U.S. Geological Survey (USGS) and its partners that detects significant earthquakes quickly, so alerts can tell people to take protective action when weak or greater shaking is expected at their location. ShakeAlert also delivers alerts that trigger automated actions, such as slowing a train and opening fire station doors.



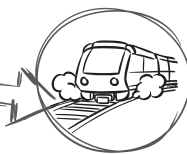
DETECTION AND PROCESSING (USGS)

Using sensors in the field, the ShakeAlert® Earthquake Early Warning system **DETECTS** ground motion from an earthquake that has already begun and passes that information to a **PROCESSING** center. ShakeAlert quickly estimates the location, magnitude, and shaking intensity of the earthquake and if the event fits the right profile, a ShakeAlert Message is issued by the USGS.



DELIVER (Distribution Partners)

Once a ShakeAlert Message is issued, it is picked up by distribution partners, such as utilities, hospitals, transportation systems, schools, emergency management agencies, and others. The contents of the Message are used to produce and **DELIVER** an alert that tells people to take protective actions, such as **DROP-COVER-HOLD ON**, or triggers automated actions.



PROTECT (Technical Partners)

The alert protects people and vital infrastructure by instructing computers to trigger automated actions, such as slowing trains, closing water valves, opening firehouse doors, starting back-up generators, and issuing public announcements.



PROTECT (You)

You may get an alert to a cell phone through a downloadable app or automatically as a Wireless Emergency Alert (WEA), just like severe weather and AMBER alerts. You may also get an alert by TV, radio, or as a public announcement. You may only have seconds to take immediate protective actions, such as **DROP-COVER-HOLD ON**. You may have to adjust to your situation and environment.

If you feel shaking or get an alert, immediately DROP-COVER-HOLD ON. Do not wait, because seconds matter!

• How should you protect yourself when you get an alert?

When you get an alert, immediately **DROP-COVER-HOLD ON**. *Do not wait to feel shaking!*

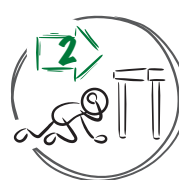
- **DROP** where you are onto your hands and knees. This position protects you from being knocked down and allows you to stay low and crawl to shelter, if it is nearby.
- **COVER** your head and neck with both arms and hands. If a sturdy table or desk is nearby, crawl underneath it for shelter. If no shelter is nearby, crawl next to an interior wall (away from windows, hanging objects, and tall furniture).
- **HOLD ON** to your shelter until shaking stops. Be prepared to move with your shelter if it shifts.



If you FEEL SHAKING or GET AN ALERT...



DROP!



COVER!



HOLD ON!