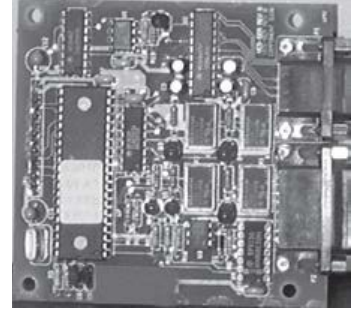


**FEATURES:**

- SMDR Printer Output
- Provides Data for V-DCH Digital Clock Head End or V-DCPI Digital Clock Protocol Interface 6
- Provides Control for the V-CIO Clock Relay Board



**DESCRIPTION:**

The V-SER plugs directly onto, and is powered through the CPU card. It provides a serial port output for Station Message Detail Reporting (SMDR) and, when used with additional equipment, also provides interface to synchronize school clocks.

**Specifications**

**POWER REQUIREMENTS:**

Powered by the CPU

**ENVIRONMENT:**

**Temperature:** -4 to +131°F (-20 to +55°C)

**Humidity:** 0 to 95% Non-Condensing

**DIMENSIONS AND WEIGHT:**

4.0" (10.16 cm) H x 3.6" (9.14 cm) L x 0.6" (1.52 cm) D

**Weight:** 0.20 lbs (0.09 kg)

**ARCHITECTS' AND ENGINEERS**

The serial card, model number V-SER, shall provide an SMDR printer output to the Valcom Intercom. The SMDR data shall be available through an integrated male DB9 type connector.

When used with additional equipment, the V-SER shall also provide for synchronization between the Valcom intercom and clocks.

Warranty information may be found on our website at [www.valcom.com/warranty](http://www.valcom.com/warranty).