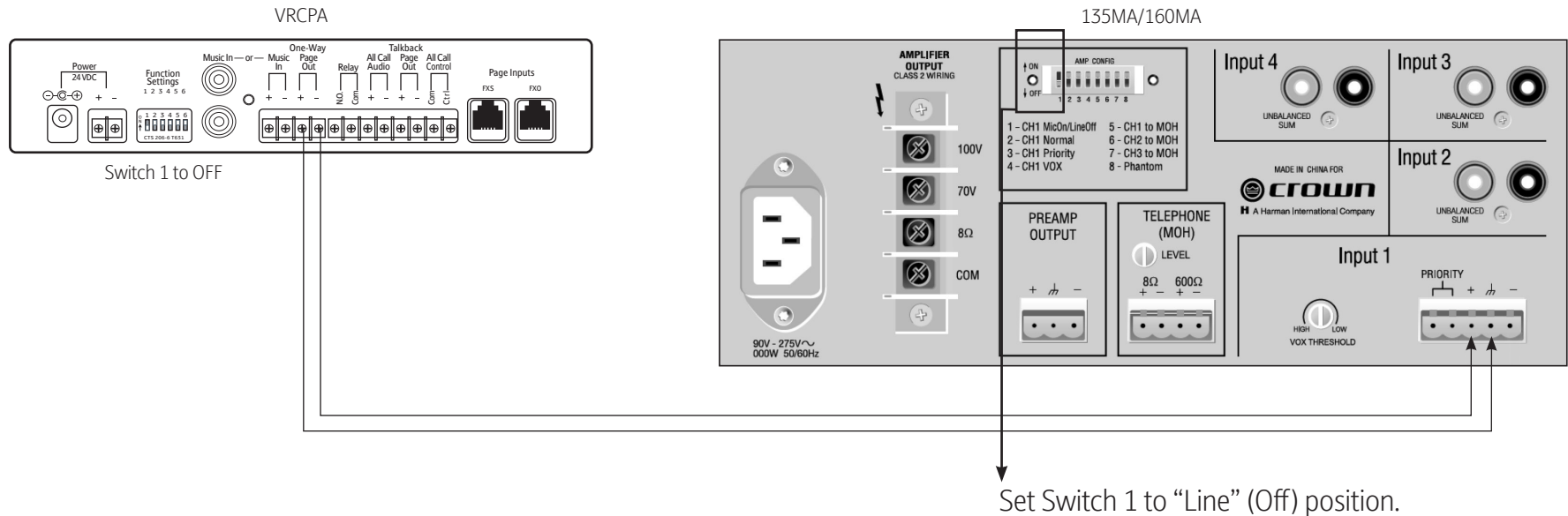


# Valcom VRCPA Connection Guide with Crown 135MA/160MA



## NOTE:

If needed, the Relay output from the VRCPA may be connected to the PRIORITY input terminal to duck other inputs during a page.

The VRCPA One-Way Page Out may also be connected to the Input 2, 3 or 4 connections if Input 1 is used for other purposes.